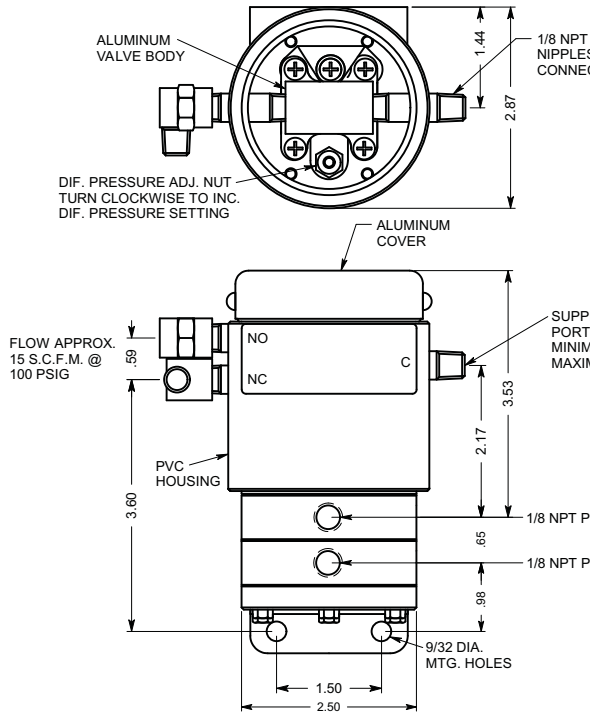




- Ranges from 10 to 100 PSID
- Pneumatic Control Applications
- Snap Acting 3-Way Valve
- Various Wetted Materials Available

MODEL SERIES 2PV-MVD Differential Pressure Actuated Valve Diaphragm Sensing Element



SHOWN WITHOUT HOUSING

GENERAL DESCRIPTION

The Model Series 2PVMVD employs a three way block and bleed valve that is actuated by either an increase or decrease in differential pressure at the sensing element. The sensing element for this device is an elastomer diaphragm that can be used for ranges from 0-10 PSID to 100 PSID. Standard wetted parts are aluminum and Buna N, however, many other materials are available. Other useful options can easily be specified with this model including the "O" option for applications requiring higher working pressures. See the Special Features section on page 2 for special wetted materials and options for particular applications. The pneumatic valve can be operated with pilot pressures ranging from 30 PSI to 125 PSI.

OTHER PV-MV VALVES ARE AVAILABLE...

The versatile design of the PV-MV pressure actuated valves allows a wide variety of sensing element arrangements and materials to be used in their construction. Diaphragm, Bellows, and Piston models can be configured for Pressure, Vacuum, and Differential Pressure applications. Models with these features and with ranges from 1.5" W.C. to 7000 psi are described in separate catalog sheets.

SPECIFICATIONS

PHYSICAL DATA (Standard)
-see page 2 for special features

- Maximum Ambient Temperature:** 180°F
- Minimum Ambient Temperature:** 0°F
- Pressure Connections:** 1/8 NPT
- Housing:** PVC
- Deadband:** Fixed
- Weight:** Approx. 2 lbs.
- Port Material:** Aluminum
- Diaphragm Material:** Buna N
- Set Point Adjustment:** Screw type, field adjustable
- Valve:** Model LTV-5 Three Way Block-and-Bleed
- Valve Connections:** 1/8 NPT
- Valve Flow Capacity:** 15 SCFM at 100 PSI
- Valve Pilot Pressure:** 30 to 125 PSIG

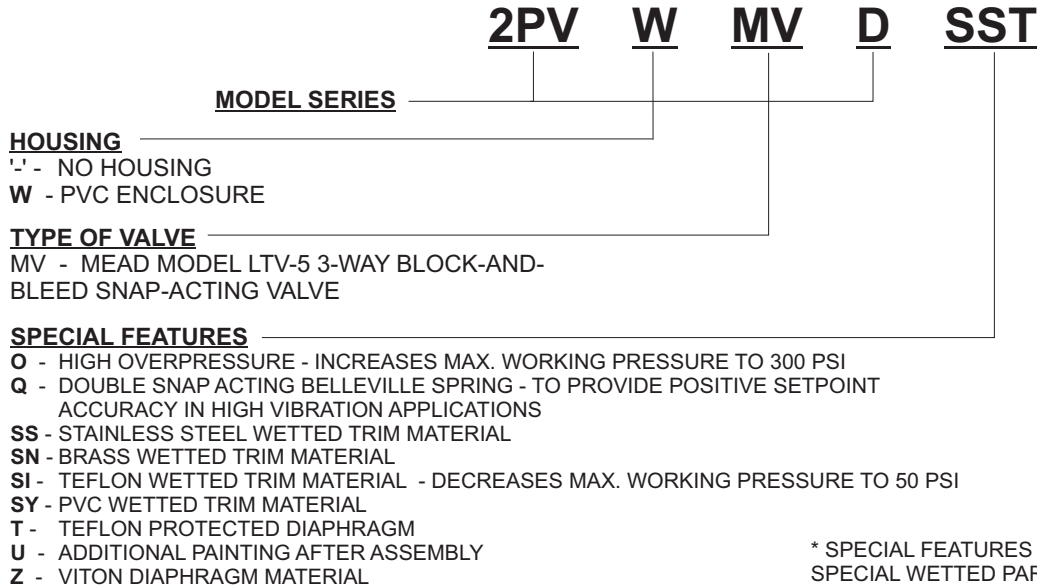
Solon Manufacturing Company

425 Center Street, P.O. Box 207, Chardon, Ohio 44024
(440) 286-7149 800-323-9717 FAX (440) 286-9047
www.solonmfg.com

ORDERING A SWITCH

MODEL SERIES 2PVMVD Differential Pressure Actuated Valve Diaphragm Sensing Element

1. SPECIFY A MODEL NUMBER



* SPECIAL FEATURES SUCH AS STAINLESS TAGGING, OR SPECIAL WETTED PARTS; KYNAR, KALREZ, HASTELLOY, ETC. ARE AVAILABLE ON REQUEST. CONSULT FACTORY FOR CAPABILITIES AND PRICING FOR ANY FEATURES NOT SHOWN.

2. SPECIFY A RANGE

ADJUSTABLE PRESSURE RANGE	MAXIMUM VALVE DEADBAND	MAX. WORKING PRESSURE
0-10 PSID	.40 PSID	100 PSI
0-20 PSID	.53 PSID	100 PSI
0-50 PSID	.90 PSID	100 PSI
0-100 PSID	1.3 PSID	100 PSI

DEADBAND NOTES

The deadbands listed in the tables are the nominal valve differentials when the valve is operated at 100 PSIG. Deadbands are decreased as pilot pressure is reduced. Contact factory for more detailed information on deadbands.

INSTALLATION NOTES

Orientation - The 2PV-MVD will operate satisfactorily in any position, however, mounting the device vertically will allow the easiest adjustability and reduce sediment in the pressure chamber.

Valve Connections - Valve port connections are 1/8 NPT and are marked C, NO, NC. Pilot pressure should be supplied at the common (C) port. Minimum 30 PSI is required to operate the valve.

Pressure Connections - 1/8 NPT female is standard.

Adjustment - Turn differential pressure adjustment nut(s) clockwise to increase setpoint. Detailed installation & calibration instructions are provided for every shipment. Factory setting is available at no charge.

Valve Schematic

